



the Inglewood

128 Quartz Crescent

1,895 sq.ft.

IMMEDIATE POSSESSION

3+1  2.5+1  2 

OPTIONS INCLUDED

- Butler's pantry between mudroom and kitchen
- Walkthrough mudroom / pantry from garage to kitchen
- Gas fireplace with tile floor to ceiling
- Full width deck with BBQ gas line off the back
- West backing - backs on to green space
- Basement development - includes one-bedroom, full bathroom and rec area
- Custom window coverings
- Upgraded lighting package
- Upgraded primary ensuite with freestanding tub and walk-in shower
- Upper floor bonus room
- Landscaping included
- Former showhome



SHOWHOME

Melanie Law | Area Sales Manager

5 – 297 Riviera Way

Cochrane, Alberta

T4C 3H7

newhomes@renovaluxury.com

SHOWHOME HOURS

Open Mon – Thurs 2pm–8pm

Weekends & Holidays 12pm-5pm



Disclaimer: The design is published by RENOVA HOMES & Renovations Ltd. All rights reserved including the reproduction whole or in part. All information, renderings, images are an artists rendition only and may not be reflective of the final product. Dimensions, square footages and features are approximate and may change without notice.


GREYSTONE

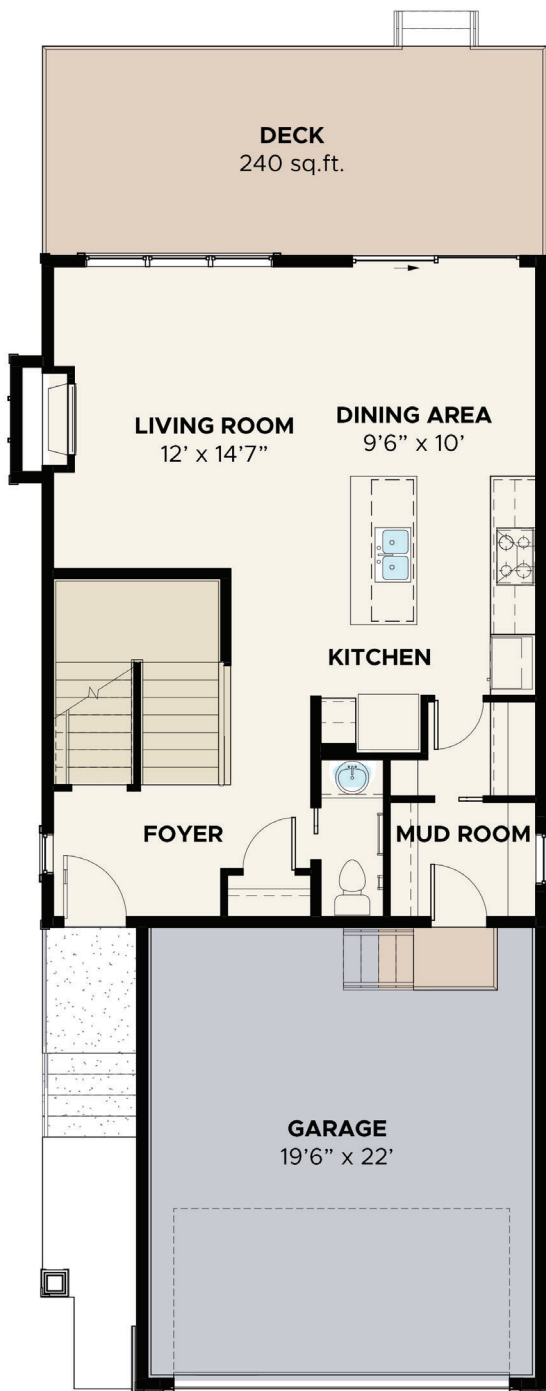
RENOVA
HOMES | RENOVATIONS

renovaluxury.com

Inglewood

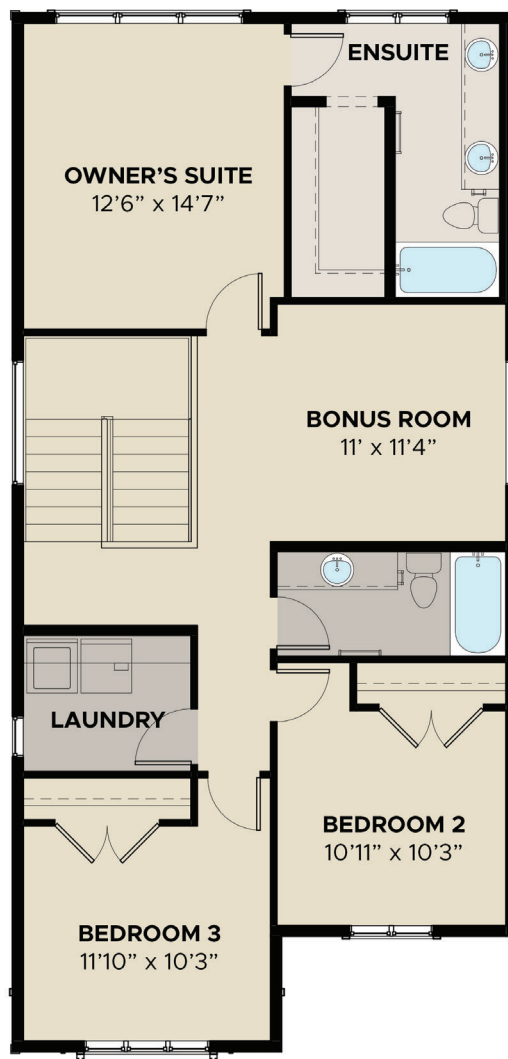
MAIN FLOOR

768 sq.ft.



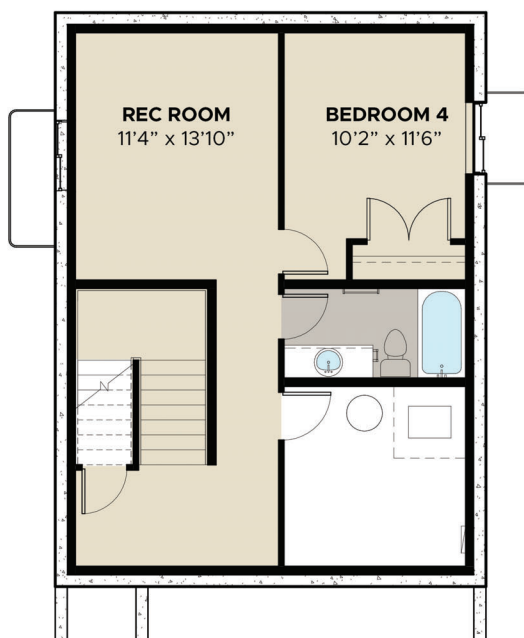
UPPER FLOOR

1,127 sq.ft.



Disclaimer: The design is published by RENOVA HOMES & Renovations Ltd. All rights reserved including the reproduction whole or in part. All information, renderings, images are an artists rendition only and may not be reflective of the final product. Dimensions, square footages and features are approximate and may change without notice.

Inglewood



BASEMENT
584 sq.ft.

Disclaimer: The design is published by RENOVA HOMES & Renovations Ltd. All rights reserved including the reproduction whole or in part. All information, renderings, images are an artists rendition only and may not be reflective of the final product. Dimensions, square footages and features are approximate and may change without notice.