



# the Sunalta 24

**121 Quartz Crescent**  
2,103 sq.ft.

**IMMEDIATE POSSESSION**

3  2.5  2 

## OPTIONS INCLUDED

- Sunalta 24 model with 2,103 sq.ft.
- Upgraded appliance package
- Full width deck with BBQ gas line
- Built-in tech desk and wine storage
- Walk through mudroom/Pantry to kitchen
- Quartz countertops through out
- Upper floor lounge/bonus area



## SHOWHOME

**Melanie Law | Area Sales Manager**

5 – 297 Riviera Way  
Cochrane, Alberta  
T4C 3H7

[newhomes@renovaluxury.com](mailto:newhomes@renovaluxury.com)

## SHOWHOME HOURS

By Appointment Only



Disclaimer: The design is published by RENOVA HOMES & Renovations Ltd. All rights reserved including the reproduction whole or in part. All information, renderings, images are an artists rendition only and may not be reflective of the final product. Dimensions, square footages and features are approximate and may change without notice.

  
GREYSTONE

**RENOVA**  
HOMES | RENOVATIONS

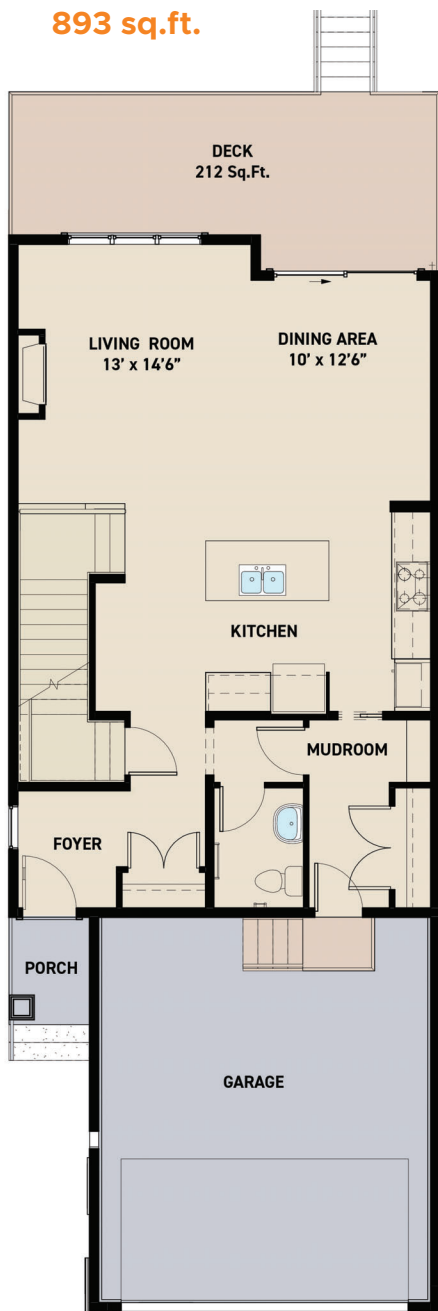
[renovaluxury.com](http://renovaluxury.com)

# Sunalta 24

Love  
where  
you live.

## MAIN FLOOR PLAN

893 sq.ft.



## UPPER FLOOR PLAN

1,210 sq.ft.



Disclaimer: The design is published by RENOVA HOMES & Renovations Ltd. All rights reserved including the reproduction whole or in part. All information, renderings, images are an artists rendition only and may not be reflective of the final product. Dimensions, square footages and features are approximate and may change without notice.