



Freestone
RIVERSONG
\$466,736
GST INCLUDED

#26 (1305) 525 River Heights Drive

Unit B - 1,286 sq.ft

DECEMBER 2025 POSSESSION



INCLUDED FEATURES

- Eligible for current 20K off incentive!
- Light colour palette (white) with upgraded black matte fixtures
- Luxury vinyl plank flooring throughout main floor
- Poured concrete patio off the rear entry!
- Full width deck with privacy wall
- Walkout unit with views of Glenbow Valley
- Upgraded black matte lighting package
- Quartz countertops throughout
- Close to trails, the Bow River, SLS Rec Centre, schools & shopping



FREESTONE SHOWHOME

Mackenzie Selinger | Sales Associate

525 River Heights Drive, Cochrane
(587) 320-2218
freestone@renovaluxury.com

SHOWHOME HOURS

Monday-Wednesday: 2-8pm
Thursday & Friday: CLOSED
Saturday-Sunday: 12-5pm



Disclaimer: The design is published by RENOVA HOMES & Renovations Ltd. All rights reserved including the reproduction whole or in part. All information, renderings, images are an artists rendition only and may not be reflective of the final product. Dimensions, square footages and features are approximate and may change without notice.

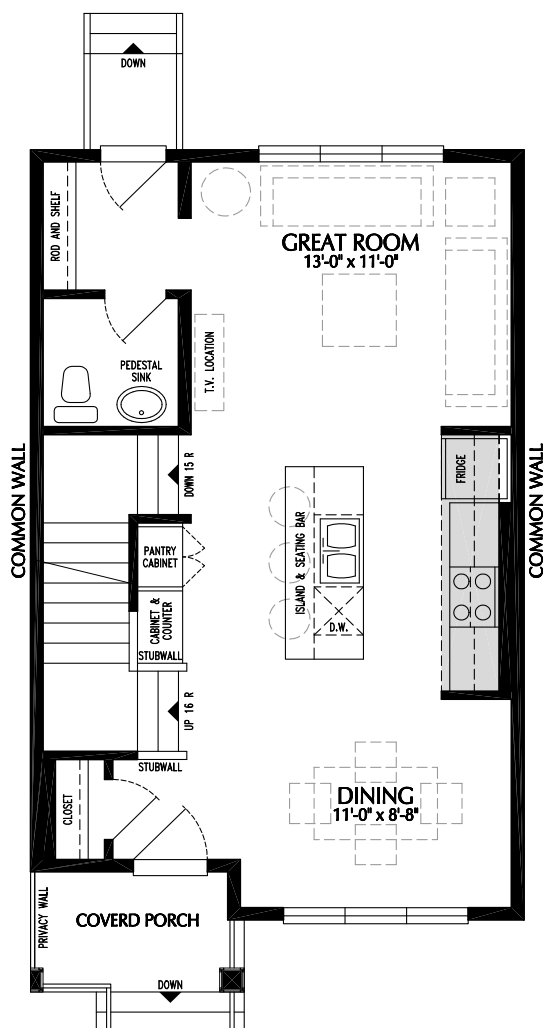
Freestone
RIVERSONG

RENOVA
HOMES | RENOVATIONS

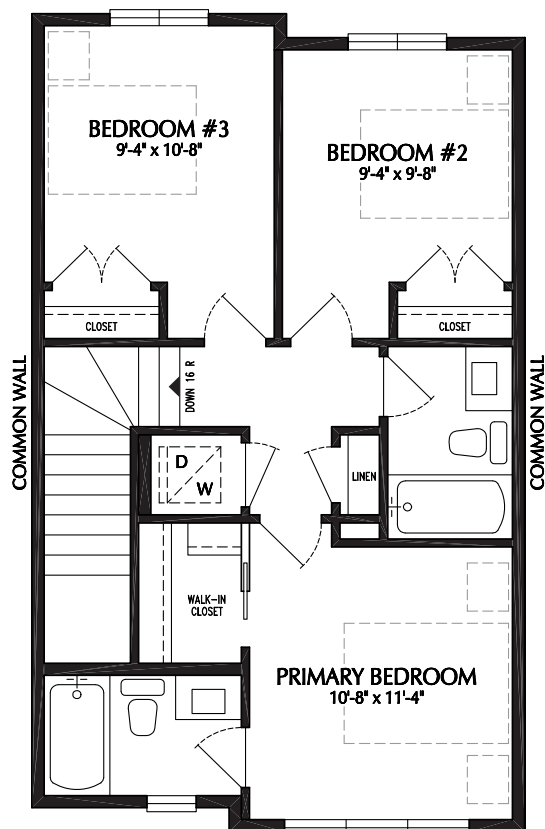
renovaluxury.com

Unit B

MAIN FLOOR PLAN
624 sq.ft.



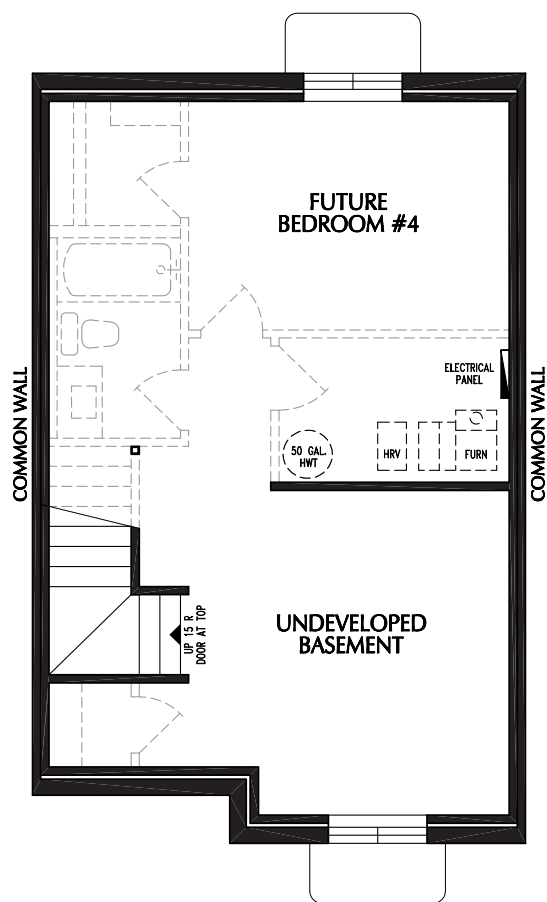
UPPER FLOOR PLAN
662 sq.ft.



Disclaimer: The design is published by RENOVA HOMES & Renovations Ltd. All rights reserved including the reproduction whole or in part. All information, renderings, images are an artists rendition only and may not be reflective of the final product. Dimensions, square footages and features are approximate and may change without notice.

Unit B

Love
where
you live.



Disclaimer: The design is published by RENOVA HOMES & Renovations Ltd. All rights reserved including the reproduction whole or in part. All information, renderings, images are an artists rendition only and may not be reflective of the final product. Dimensions, square footages and features are approximate and may change without notice.