

the Sunalta



268 Precedence View
2,103 sq.ft.

FEBRUARY POSSESSION



OPTIONS INCLUDED

- Award Winning Sunalta - Modern Farmhouse
- Located in Prestigious *Precedence* on the Ridge and backing to Glenbow Provincial Park
- Walk-out Lot with a full 24' deck off the kitchen and BBQ Gas Line
- Poured concrete patio to the walk out
- Upgraded, built in appliance package
- LED Undercabinet lights to the kitchen
- Built in wine storage and desk area off the kitchen
- Luxury Vinyl flooring throughout the main floor
- Upper floor bonus room
- Undeveloped basement with rough-ins and ready for future development
- Glass railing to the upper deck
- First Time Home Buyers save \$39K!!

PRECEDENCE SHOWHOME

Melanie Law | Area Sales Manager

90 Precedence View, Cochrane AB
587-500-2801
precedence@renovaluxury.com

SHOWHOME HOURS

Monday-Wednesday: 2-8pm
Thursday: 2-8pm
Friday: Closed
Saturday-Sunday: 12-5pm



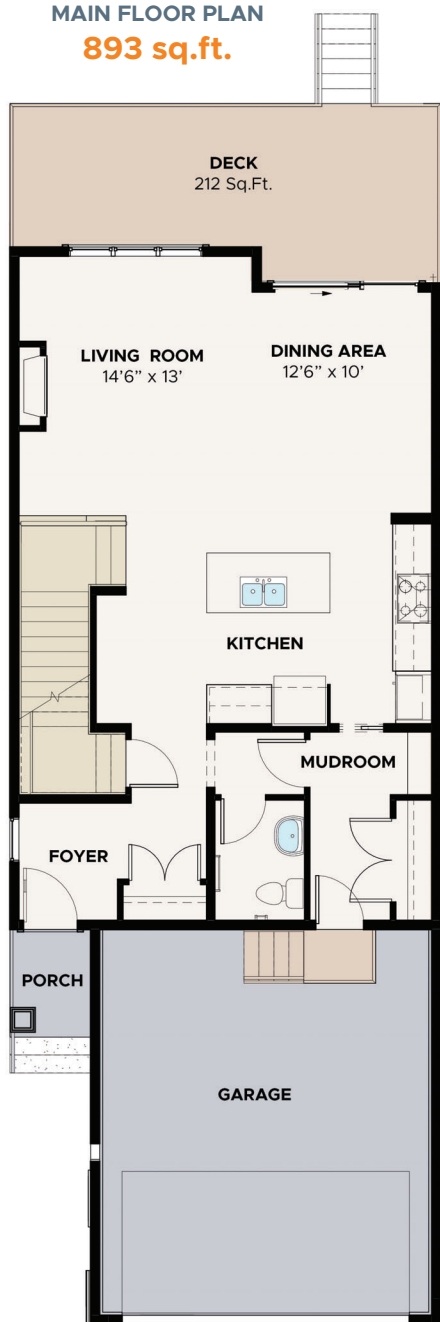
Disclaimer: The design is published by RENOVA HOMES & Renovations Ltd. All rights reserved including the reproduction whole or in part. All information, renderings, images are an artists rendition only and may not be reflective of the final product. Dimensions, square footages and features are approximate and may change without notice.

Precedence
IN RIVERSIDE

Sunalta

MAIN FLOOR PLAN

893 sq.ft.



UPPER FLOOR PLAN

1,210 sq.ft.



Disclaimer: The design is published by RENOVA HOMES & Renovations Ltd. All rights reserved including the reproduction whole or in part. All information, renderings, images are an artists rendition only and may not be reflective of the final product. Dimensions, square footages and features are approximate and may change without notice.