



END UNIT

RiverPointe

VILLAS BY THE BOW

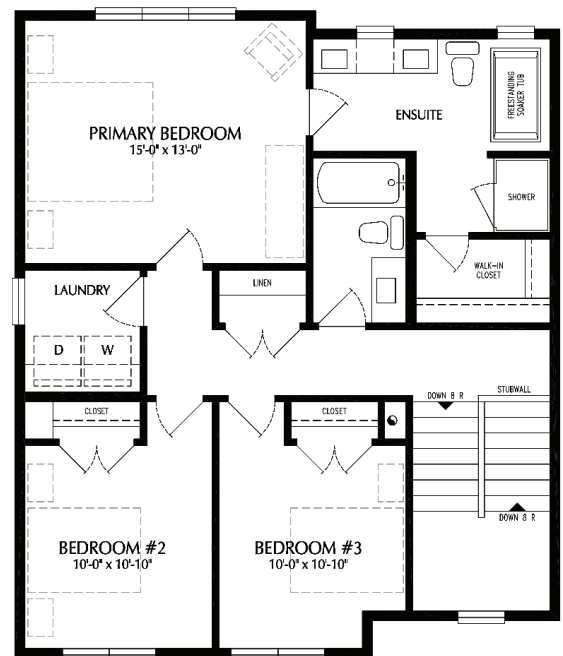
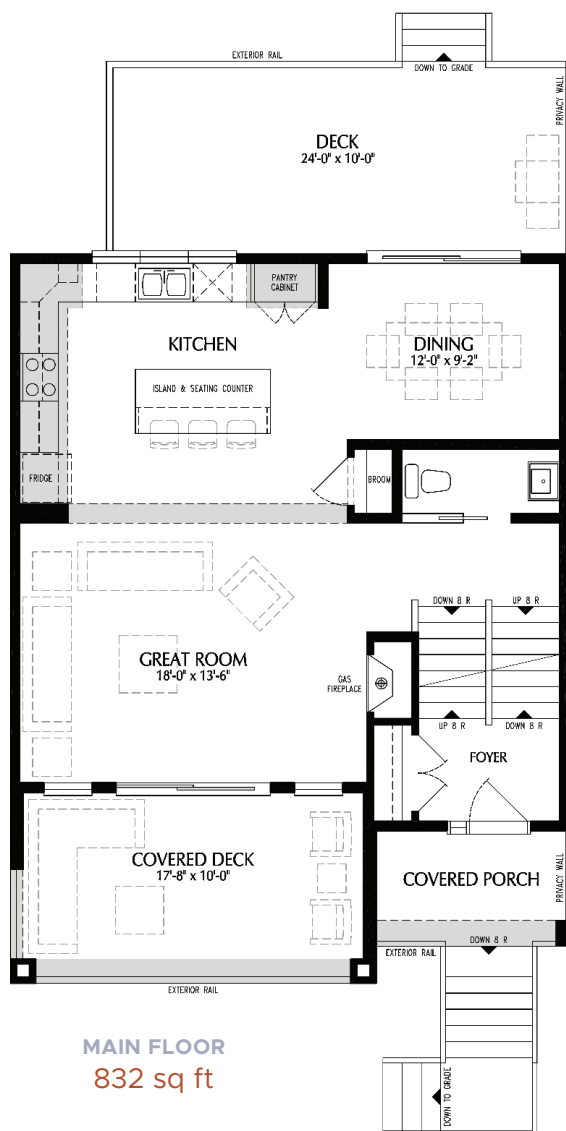
1,916 sq.ft.

 3 |  2.5 |  2

RENOVA

HOMES | RENOVATIONS

Love
where
you live.



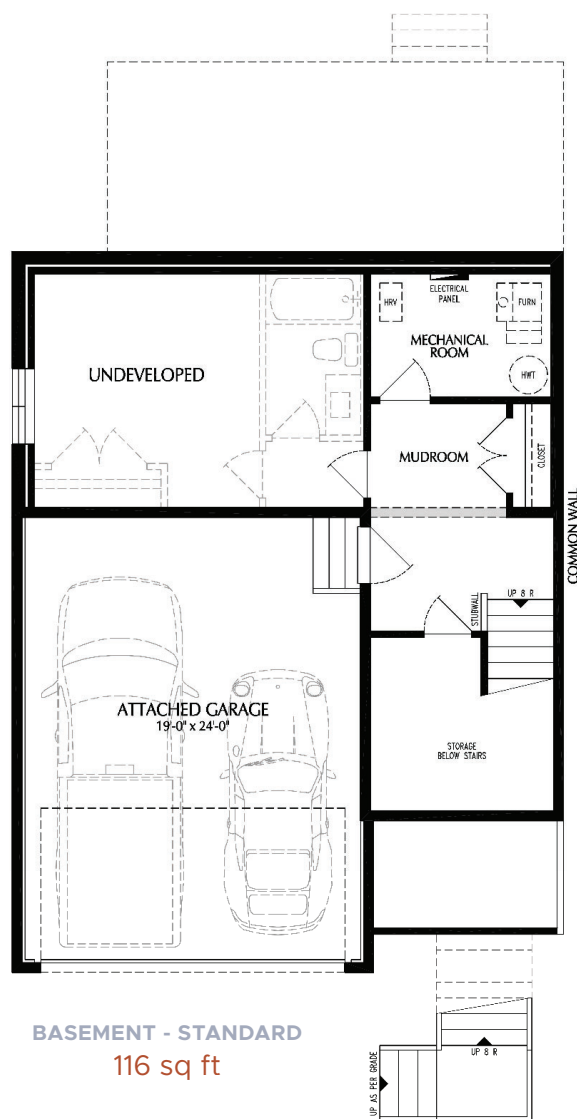
riverpointevillas.ca

RiverPointe
VILLAS BY THE BOW

Disclaimer: The design is published by Renova Homes & Renovations Ltd. All rights reserved including the reproduction, whole or in part. All information, renderings, images are an artists rendition only and may not be reflective of the final product. Dimensions, square footages and features are approximate and may change without notice. **2024**

RENOVA
HOMES | RENOVATIONS

Love
where
you live.



BASEMENT - STANDARD
116 sq ft



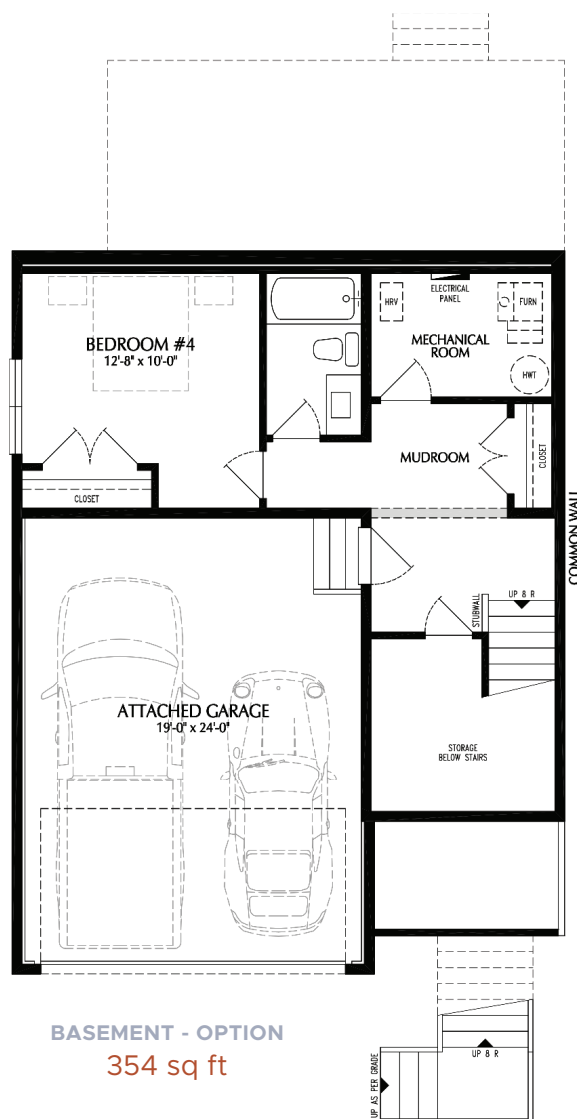
riverpointevillas.ca

RiverPointe
VILLAS BY THE BOW

Disclaimer: The design is published by Renova Homes & Renovations Ltd. All rights reserved including the reproduction, whole or in part. All information, renderings, images are an artists rendition only and may not be reflective of the final product. Dimensions, square footages and features are approximate and may change without notice. **2024**

RENOVA
HOMES | RENOVATIONS

Love
where
you live.



BASEMENT - OPTION
354 sq ft



riverpointevillas.ca

RiverPointe
VILLAS BY THE BOW

Disclaimer: The design is published by Renova Homes & Renovations Ltd. All rights reserved including the reproduction, whole or in part. All information, renderings, images are an artists rendition only and may not be reflective of the final product. Dimensions, square footages and features are approximate and may change without notice. **2024**

RENOVA
HOMES | RENOVATIONS