

the Sunalta 24



308 Crimson Ridge Place
2,103 sq.ft

AUGUST POSSESSION



OPTIONS INCLUDED

- Full width deck
- Walk out lot
- Concrete patio in back yard
- Built in appliance package
- Basement development
- Enhanced exterior windows in black
- Modern farmhouse exterior
- Upgraded lighting package
- Backs to a natural tree reserve



CRIMSON RIDGE SHOWHOME

Melanie Law | Area Sales Manager

176 Precedence View, Cochrane AB
587-500-2801
precedence@renovaluxury.com

SHOWHOME HOURS

Monday-Wednesday: 2-8pm
Thursday-Friday: Closed
Saturday-Sunday: 12-5pm



Disclaimer: The design is published by RENOVA HOMES & Renovations Ltd. All rights reserved including the reproduction whole or in part. All information, renderings, images are an artists rendition only and may not be reflective of the final product. Dimensions, square footages and features are approximate and may change without notice.

CRIMSON
Ridge

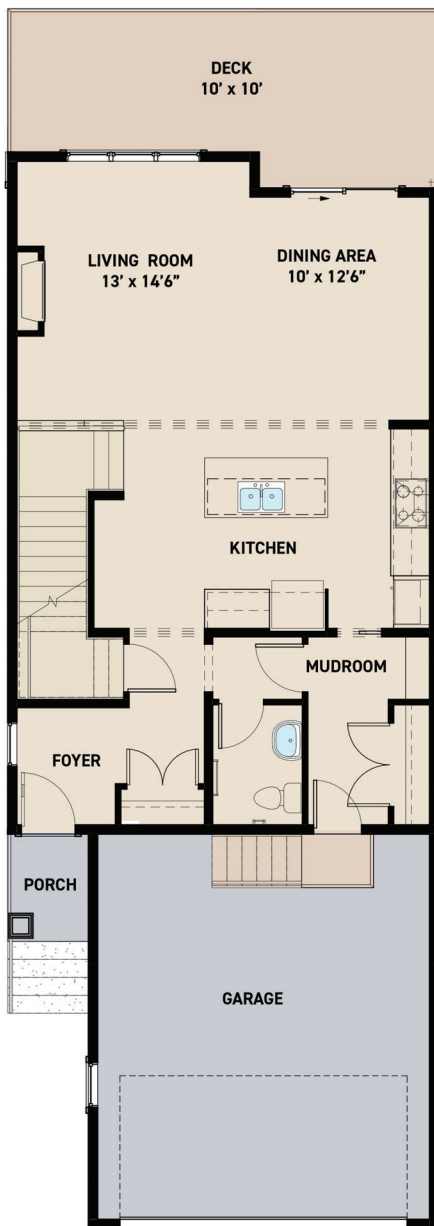
RENOVA
HOMES | RENOVATIONS

renovaluxury.com

Sunalta 24

MAIN FLOOR PLAN

893 sq.ft.



UPPER FLOOR PLAN

1,210 sq.ft.



Disclaimer: The design is published by RENOVA HOMES & Renovations Ltd. All rights reserved including the reproduction whole or in part. All information, renderings, images are an artists rendition only and may not be reflective of the final product. Dimensions, square footages and features are approximate and may change without notice.

Sunalta 24

BASEMENT
681 sq.ft.



Disclaimer: The design is published by RENOVA HOMES & Renovations Ltd. All rights reserved including the reproduction whole or in part. All information, renderings, images are an artists rendition only and may not be reflective of the final product. Dimensions, square footages and features are approximate and may change without notice.