



the Inglewood

47 Willow Park Point
1,895 sq.ft

IMMEDIATE POSSESSION



OPTIONS INCLUDED

- Premium walk-out lot
- Stainless steel appliance package with washer and dryer
- Upgraded 5 piece master ensuite
- Upgraded walkthrough pantry layout
- Quartz countertops throughout and luxury vinyl plank flooring
- Gas fireplace with large format tiles
- 9' Main ceilings and 9' walkout ceilings
- Upgraded MDF Shelving throughout
- Extended Rear deck and poured patio
- Designer lighting package

PRECEDENCE SHOWHOME

Melanie Law | Area Sales Manager

176 Precedence View, Cochrane AB
587-500-2801
precedence@renovaluxury.com

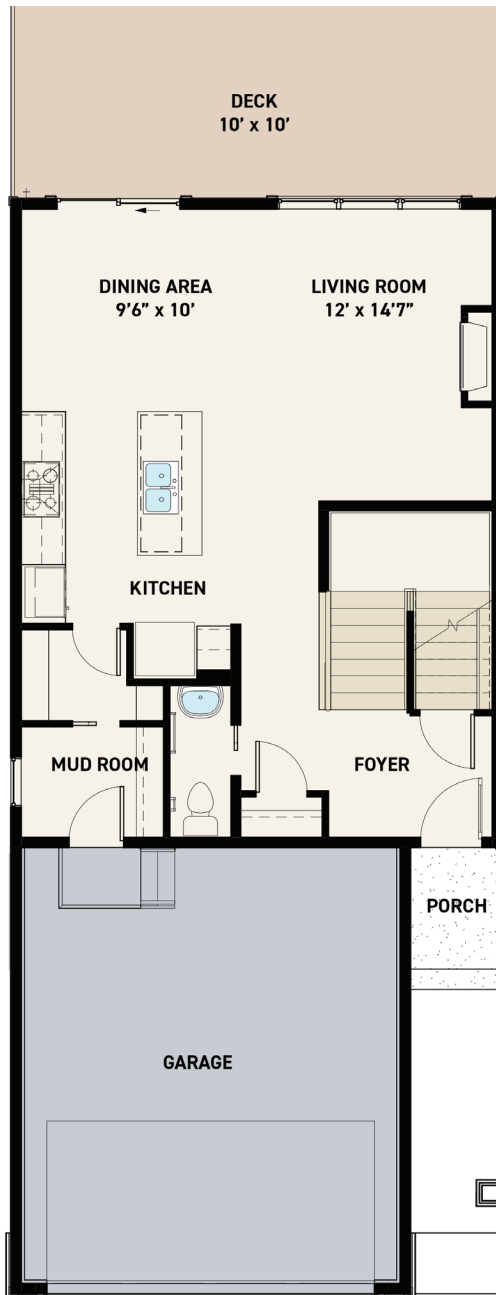
SHOWHOME HOURS

Monday-Wednesday: 2-8pm
Thursday: 2-8pm
Friday: Closed
Saturday-Sunday: 12-5pm

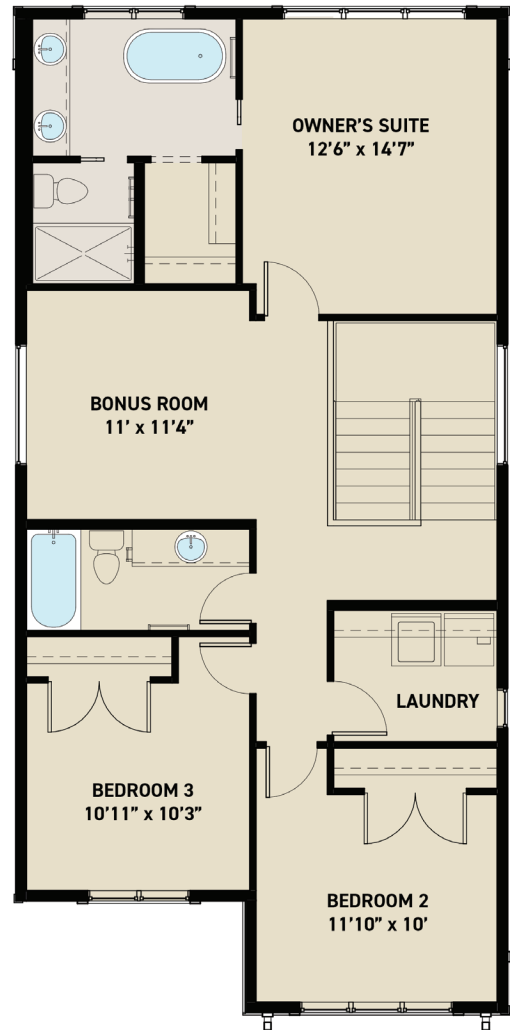


Disclaimer: The design is published by RENOVA HOMES & Renovations Ltd. All rights reserved including the reproduction whole or in part. All information, renderings, images are an artists rendition only and may not be reflective of the final product. Dimensions, square footages and features are approximate and may change without notice.

Inglewood



MAIN FLOOR PLAN
768 sq.ft.



UPPER FLOOR PLAN
1,127 sq.ft.

Disclaimer: The design is published by RENOVA HOMES & Renovations Ltd. All rights reserved including the reproduction whole or in part. All information, renderings, images are an artists rendition only and may not be reflective of the final product. Dimensions, square footages and features are approximate and may change without notice.