



# the Scarboro

**229 Precedence View**  
2,194 sq.ft

**IMMEDIATE POSSESSION**



### OPTIONS INCLUDED

- Full width deck
- Premium reverse walk-out lot
- Stainless steel built-in appliance package with washer and dryer
- Gas fireplace with large format tiles
- Quartz counter tops and luxury vinyl plank flooring
- Upgraded MDF Shelving throughout
- Located in a quiet cul-de-sac
- Move-In Ready



### PRECEDENCE SHOWHOME

**Melanie Law | Area Sales Manager**

176 Precedence View, Cochrane AB  
587-500-2801  
precedence@renovaluxury.com

### SHOWHOME HOURS

Monday-Wednesday: 2-8pm  
Thursday: 2-8pm  
Friday: Closed  
Saturday-Sunday: 12-5pm



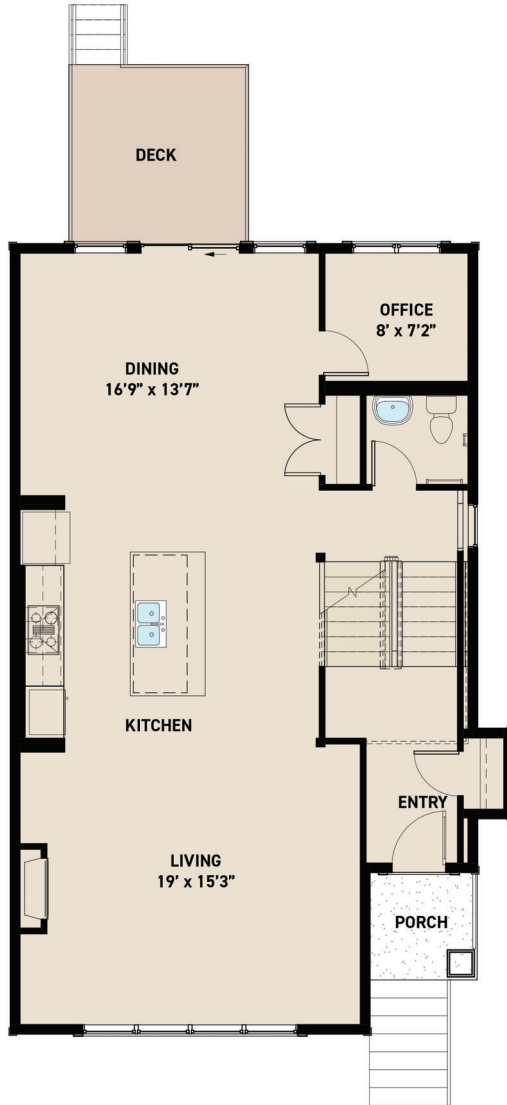
Disclaimer: The design is published by RENOVA HOMES & Renovations Ltd. All rights reserved including the reproduction whole or in part. All information, renderings, images are an artists rendition only and may not be reflective of the final product. Dimensions, square footages and features are approximate and may change without notice.



# Scarboro

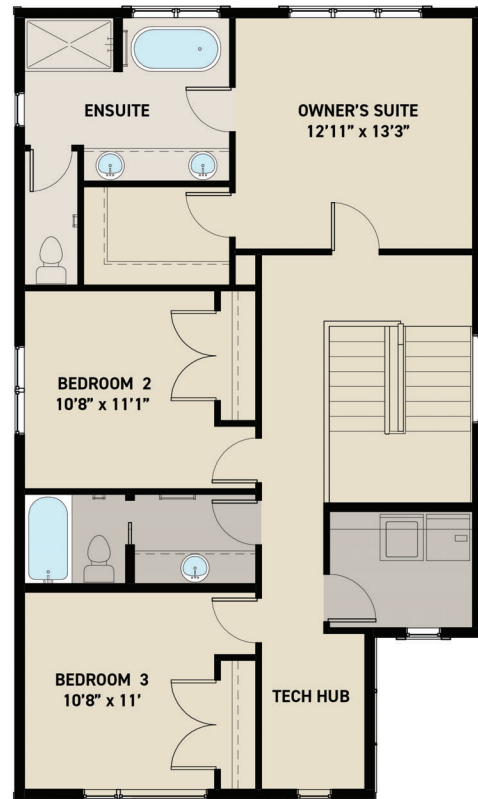
## MAIN FLOOR PLAN

1,102 sq.ft.



## UPPER FLOOR PLAN

1,092 sq.ft.



Disclaimer: The design is published by RENOVA HOMES & Renovations Ltd. All rights reserved including the reproduction whole or in part. All information, renderings, images are an artists rendition only and may not be reflective of the final product. Dimensions, square footages and features are approximate and may change without notice.