



the Sunalta 24

308 Crimson Ridge Place

2100 sq.ft

AUGUST POSSESSION



OPTIONS INCLUDED

- Full width deck
- Walk out Lot
- Concrete patio in back yard
- Built in appliance package.
- Main floor built in
- Basement development
- Enhanced exterior windows in Black
- Modern farmhouse exterior
- Upgraded lighting package
- Backs to a natural tree reserve



CRIMSON RIDGE SHOWHOME

Melanie Law | Area Sales Manager

176 Precedence View, Cochrane AB
587-500-2801
precedence@renovaluxury.com

SHOWHOME HOURS

Monday-Wednesday: 2-8pm

Thursday-Friday: Closed

Saturday-Sunday: 12-5pm



Disclaimer: The design is published by RENOVA HOMES & Renovations Ltd. All rights reserved including the reproduction whole or in part. All information, renderings, images are an artists rendition only and may not be reflective of the final product. Dimensions, square footages and features are approximate and may change without notice.

CRIMSON
Ridge

RENOVA
HOMES | RENOVATIONS

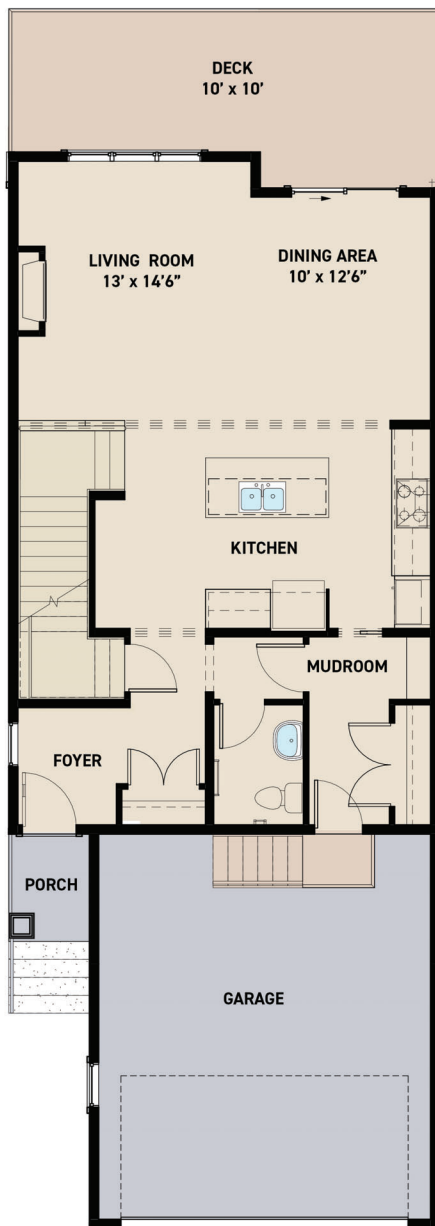
renovaluxury.com

Sunalta 24

Love
where
you live.

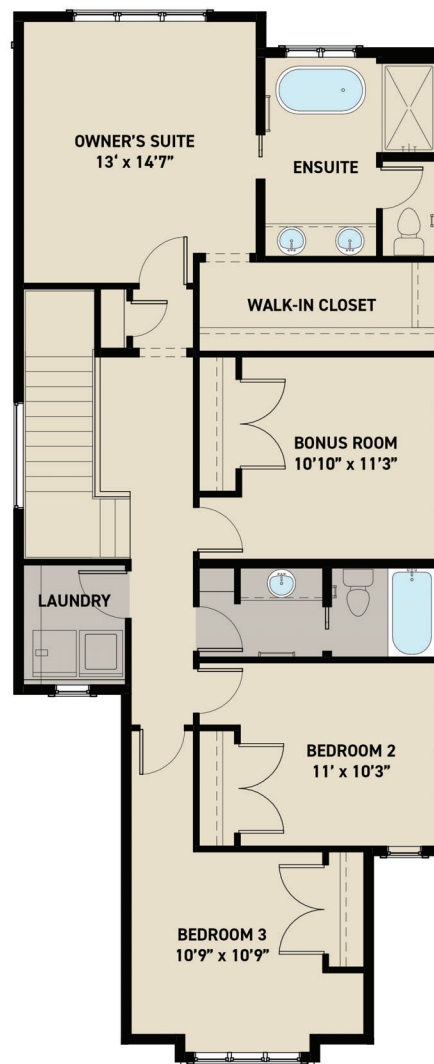
MAIN FLOOR PLAN

893 sq.ft.



UPPER FLOOR PLAN

1,210 sq.ft.



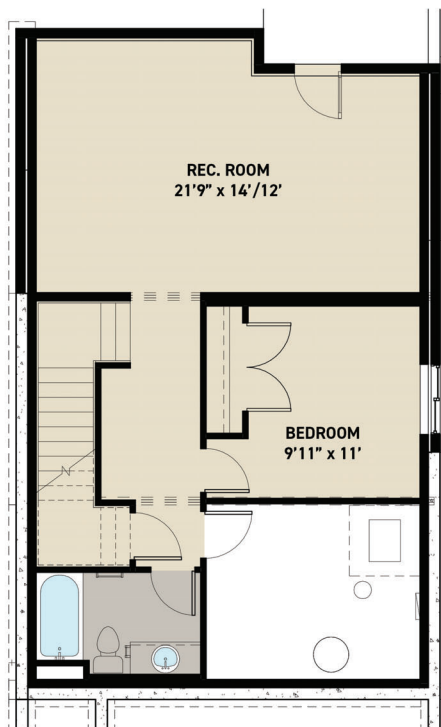
Disclaimer: The design is published by RENOVA HOMES & Renovations Ltd. All rights reserved including the reproduction whole or in part. All information, renderings, images are an artists rendition only and may not be reflective of the final product. Dimensions, square footages and features are approximate and may change without notice.

Sunalta 24

Love
where
you live.

BASEMENT

681 sq.ft.



Disclaimer: The design is published by RENOVA HOMES & Renovations Ltd. All rights reserved including the reproduction whole or in part. All information, renderings, images are an artists rendition only and may not be reflective of the final product. Dimensions, square footages and features are approximate and may change without notice.